

## Fuel dispenser AT02/LC series

### DESCRIPTION

Fuel pump with flow rate from 40 to 120 l/min, single or alternate version, ideal for refuelling car fleets.

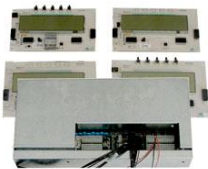
### MAIN CHARACTERISTICS

- Direct connection to 1-2 level probes, with direct visualisation on the dispenser display of the level of product in the tank.
- Possibility to install an integrated management system to allow deliveries with data download via LAN, WiFi or GPRS modem.
- Designed for dispensing unleaded petrol up to 50 l/min and diesel up to 120 l/min.

A vapour recovery system is available for use with petrol.

*The AT15 dipeser is an apparatus of the IIA group suitable for use in areas classified with the presence of flammable gases (Zone 1, category 2G or zone 2, category 3G). It is designed and built according to the ATEX directive 2014/34 / EU, according to the standard: EN13617-1*





The latest generation electronic head is certified according to RI OIML R117-1 (MID COMPLIANT). It has 25 mm high LED backlit digits, 7 digit electromechanical totaliser and 7 digit electronic volume with 2 decimals. It has a correct pulse output for remote reading, connection to a host via serial line, WiFi devices or GPRS modems, stock management produced by a probe with continuous measurement and low levels. It is designed for product temperature compensation (-10 +40) according to API-STM-IP table 53B.



PTF volumetric meter with pistons with electronic calibrations and accuracy of  $\pm 0,5\%$ .

**PTF Technical specifications**

|                        |                               |
|------------------------|-------------------------------|
| Max operating pressure | 5 bar                         |
| Flow rate              | min 2,5 l/min - max 120 l/min |
| Accuracy               | $\pm 0,5$                     |
| Cyclic volume          | 0,5 l                         |



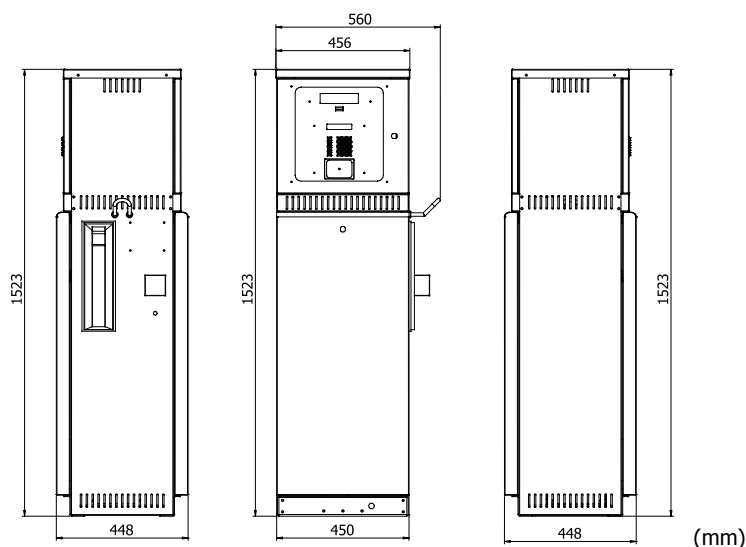
RTF single block, self-priming gear or blades pump, complete with filter, degassing chamber, adjustable bypass up to 3,5 bar and non-return valve.

| <b>Technical specification</b> | <b>RTF standard</b>          | <b>RTF high flow rate</b>   |
|--------------------------------|------------------------------|-----------------------------|
| Operating pressure             | 3 bar                        | 2÷3 bar                     |
| Flow rate                      | min 2,5 l/min – max 80 l/min | min 5 l/min – max 120 l/min |
| Electrical motor               | 0,78 KW                      | 2,2 KW                      |
| Speed motor                    | 1400 rpm                     | 2850 rpm                    |

**TECHNICAL FEATURES**

|                         |  |
|-------------------------|--|
| • Housing               | Stainless steel  |
| • Flexible hose         | Light version, section according the flow rate                   |
| • Nozzle                | Automatic type, ATEX certificate                                 |
| • Computing head        | LCD display 6 digit 1" high, LED backlighting                    |
| • Pump                  | OIML-approved monoblock with check valve                         |
| • Filter                | Stainless steel, 100 $\mu$ m, reusable                           |
| • Meter                 | $\pm 0,5\%$ (MID Compliant)                                      |
| • Motor                 | Ex-proof, Three Phase, 1/2,2 kW (380 V)                          |
| • Flow rate             | 40 ÷ 120 l/min   |
| • Operating temperature | -25°C ÷ +55°C (heating system for temperature less than -10 °C)  |
| • Vapor Recovery (VRS)  | Mechanical type on ZVA GRVP nozzle with proportional adjustment  |
| • Monitoring VRS        | Available on request   |
|                         | CE-M EU Type Approval No. T10820 (MID 2014/32/UE)                |
| • Marking               | CE  II 2G Ex IIA T3 Gb (ATEX 2014/34/UE) (Fuel)                  |
|                         | CE  II 3G Ex IIA T3 Gc (ATEX 2014/34/UE) (Diesel, Biodiesel HVO) |

**DIMENSIONS**



Specification subject to change without notice